



---

---

---

---

---

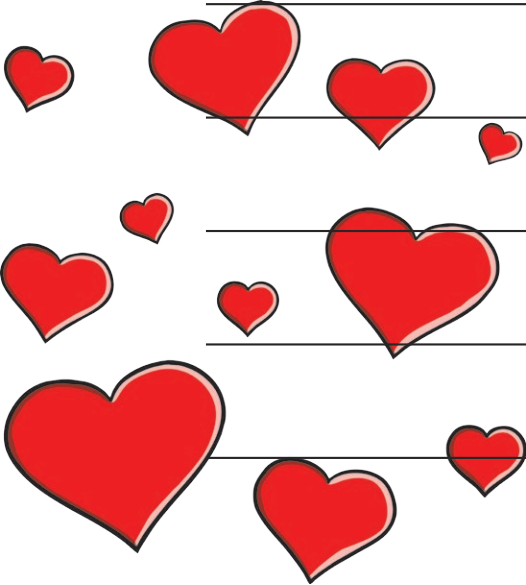
---

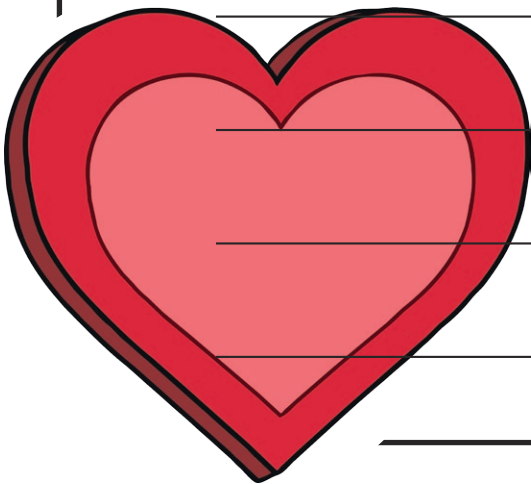
---

---

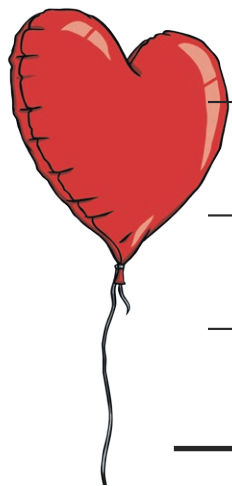
---

---





A series of ten horizontal lines are arranged vertically in the lower half of the page, providing a space for writing. The lines are evenly spaced and extend across most of the page width.



---

---

---

---

---

---

---

---



---

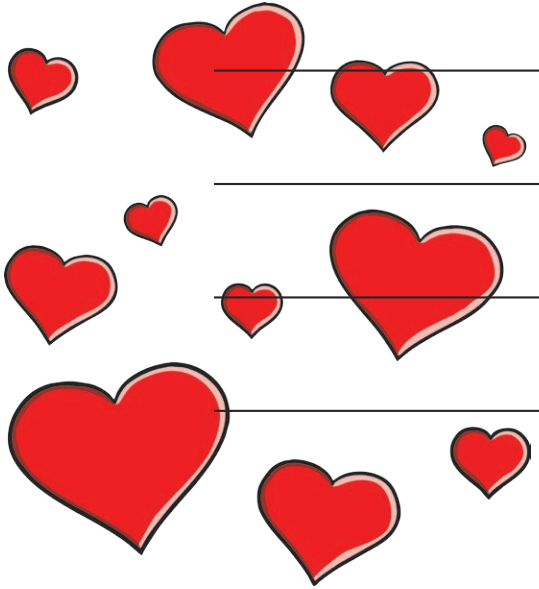
---

---

---

---

---



---

---

---

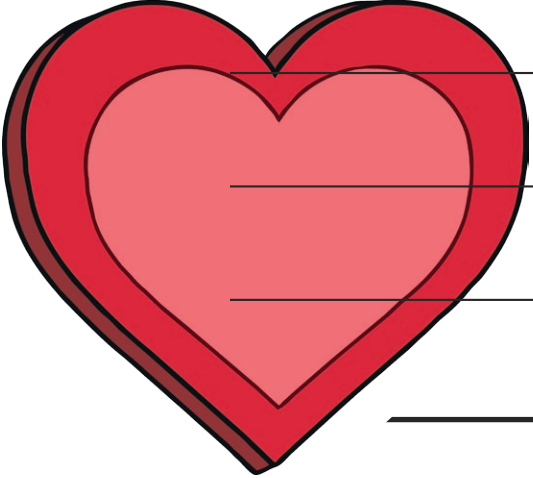
---

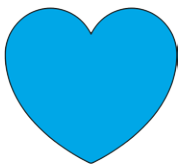
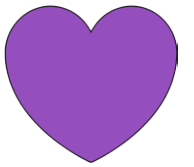
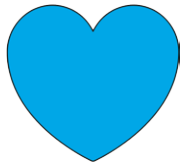
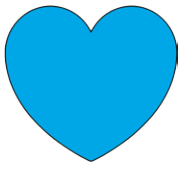
---

---

---

---





Handwriting practice lines consisting of ten horizontal lines.

